

## Installation and compatibility information PG5 1.4 & Microsoft Windows 8 (64-bit)

When working with PG5 1.4 under MS Windows 8, some special points are to be considered. In this document you find the references which were tested and the work-arounds for the difficulties under Microsoft Windows 8.



As the last version of PG5 (PG5 2.1) is fully compatible with Windows 8, it is not planned to make improvement in PG5 1.4.

### Revision History

Date	Description
04.03.2013	Review
28.02.2013	First version

### Table of Content

<b>1. Introduction .....</b>	<b>2</b>
<b>2. Installation of PG5 V1.4.300 with Patch15 (PG5 SP1.4.300).....</b>	<b>2</b>
<b>3. Start SPM for first time .....</b>	<b>4</b>
<b>4. Project directory access restrictions .....</b>	<b>5</b>
4.1 Change the 'Projects Directory' to a 'Public' directory .....	6
4.2 Adapt the user access rights of the default directory .....	6
<b>5. Device Configurator .....</b>	<b>9</b>
<b>6. HLP help file format .....</b>	<b>10</b>
<b>7. Tests.....</b>	<b>14</b>

Saia-Burgess Controls AG

Bahnhofstrasse 18 | CH-3280 Murten | Schweiz

P +41 (0)26 672 72 72 | F +41 (0)26 672 74 99 | www.saia-burgess.com

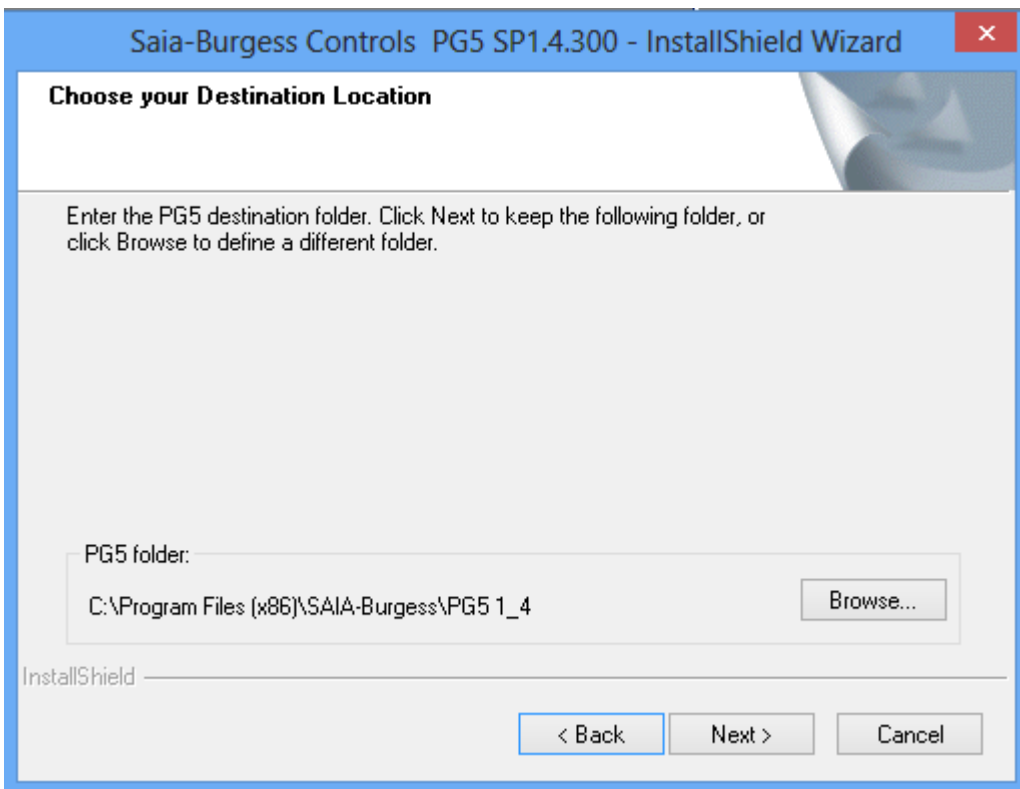
## 1. Introduction

It is still possible to install and use the PG5 1.4.300 under the last Microsoft operating system, Windows 8 64 bit.

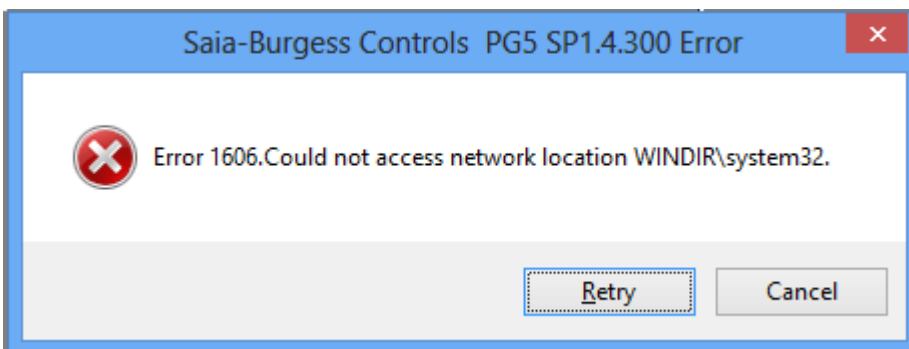
This document describes the installation, the compatibility issues and workarounds in order to use PG5 1.4 on this new operating system.

## 2. Installation of PG5 V1.4.300 with Patch15 (PG5 SP1.4.300)

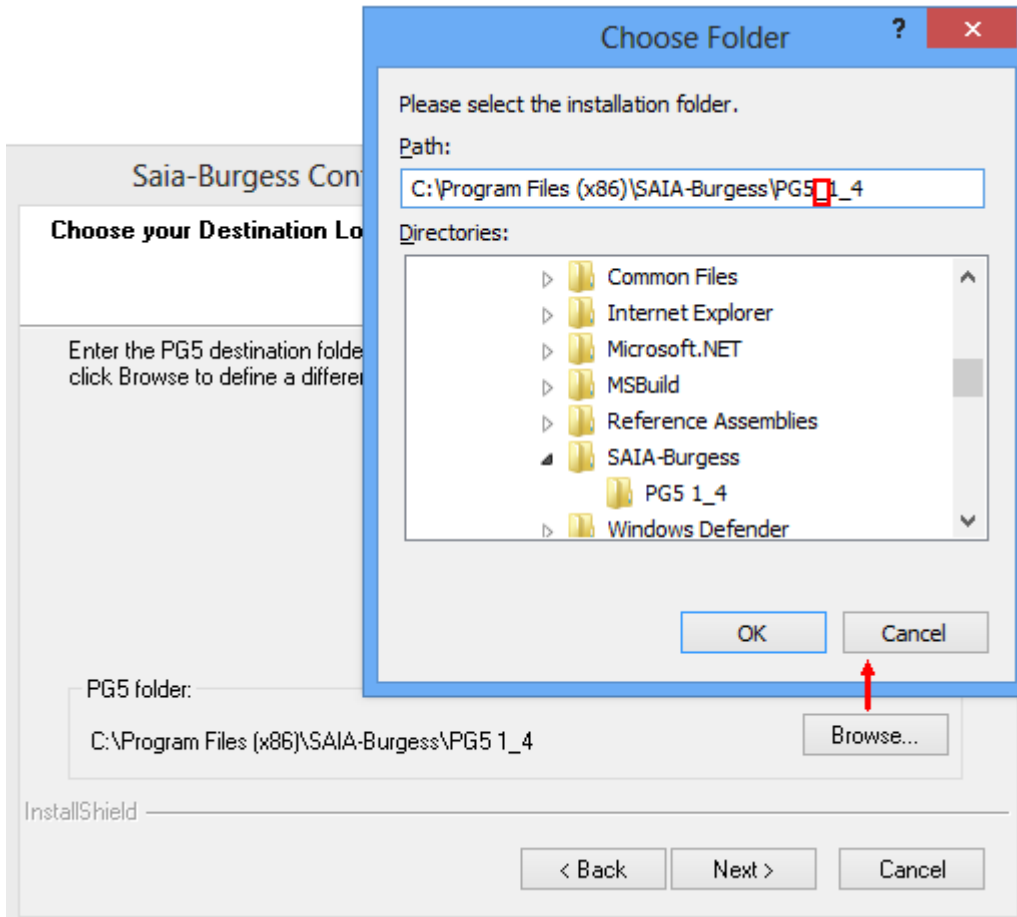
If you install PG5 under the default installation path "C:\Program Files\SAIA-Burgess\PG5 1\_4" the installation stops with the following message:



- "Error 1606: could not access network location WINDIR\System32"



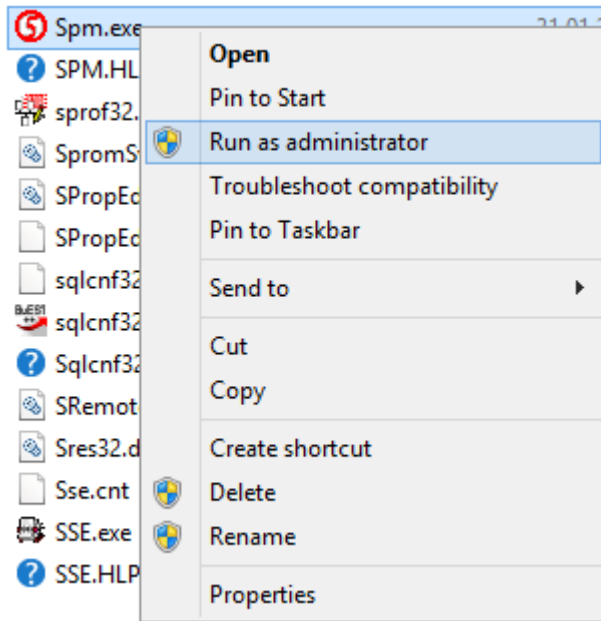
You have to remove the hyphen of the installation path: "C:\Program Files\SAIA-Burgess\PG5\_1\_4 " (add "\_" between "PG5" and "1\_4") or entering another path. Then it will be possible to install PG5 1.4.



### 3. Start SPM for first time

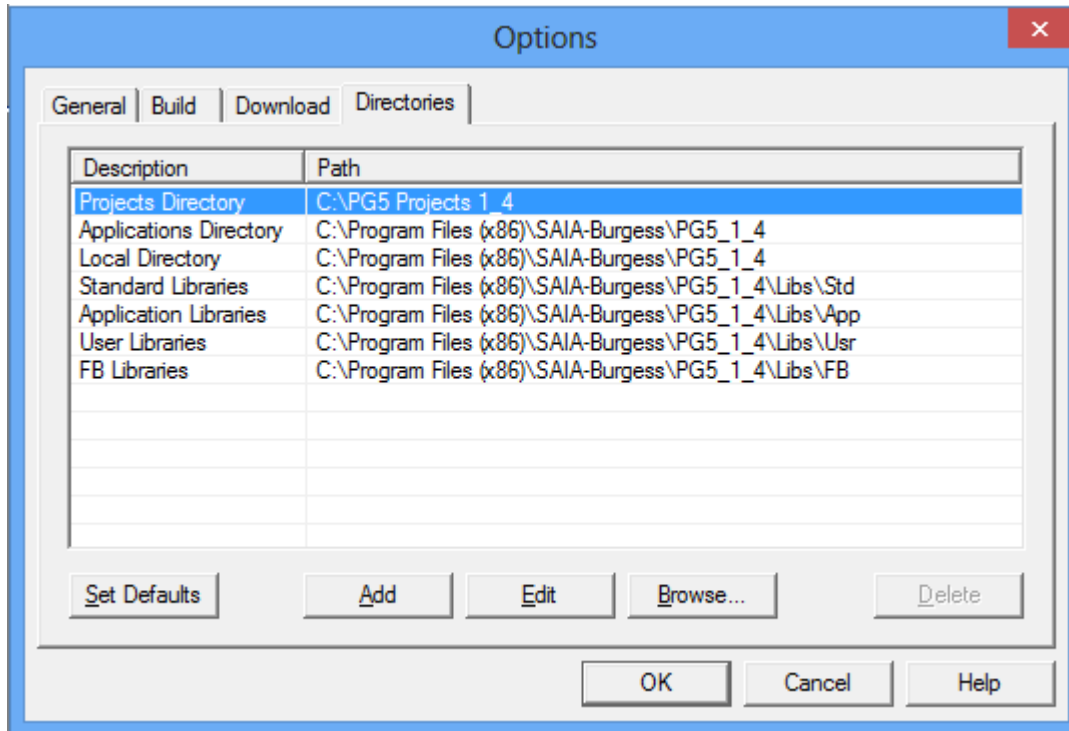
When you start the first time the Saia Project Manager - SPM.exe, it has to be opened with Administrator rights:

- With Windows Explorer, go into the installation folder of PG5, select the file 'SPM.exe', then right click on and in the context menu, select 'Run as administrator'.



## 4. Project directory access restrictions

In PG5 1.4, the default directory for the projects is “C:\PG5 Projects 1\_4”. This path is displayed in the ‘Options’ dialog, accessible under the ‘Tools’ menu of the ‘Project Manager’.

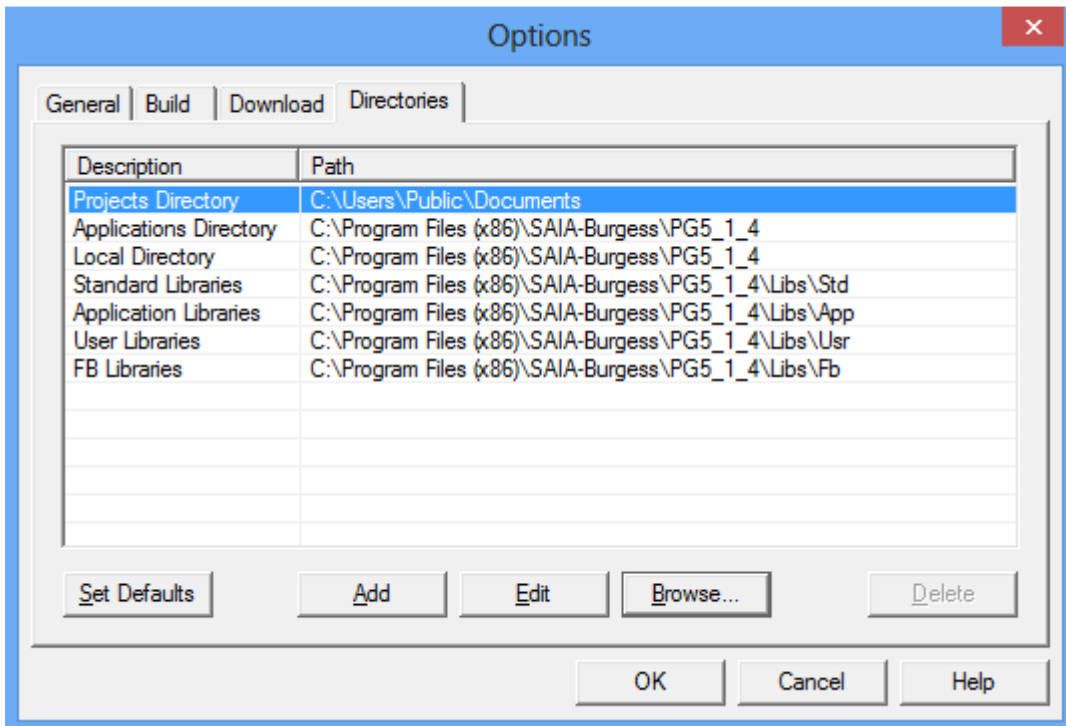


Using this location in Windows 8 can generate some troubles when accessing the project files. In order to avoid those problems, the following options are available:

- Change the project directory to a ‘Public’ directory.
- Adapt the user access rights of the default directory ‘C:\PG5 Projects 1\_4’

## 4.1 Change the 'Projects Directory' to a 'Public' directory

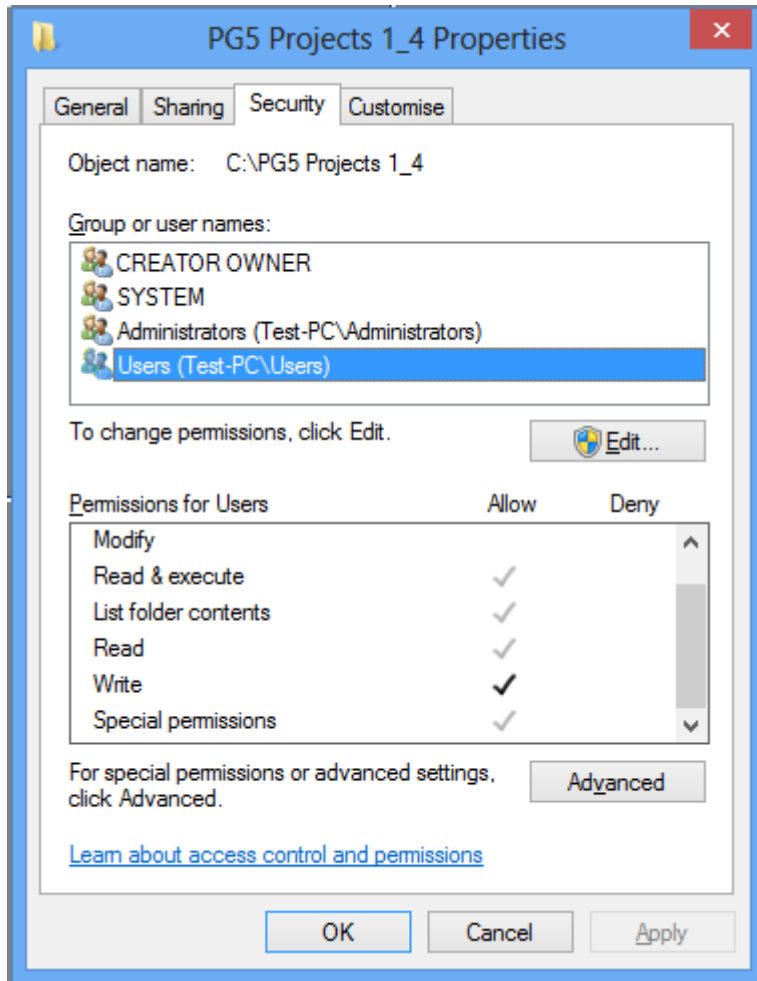
Changing the Project Directory in the Options Dialog:



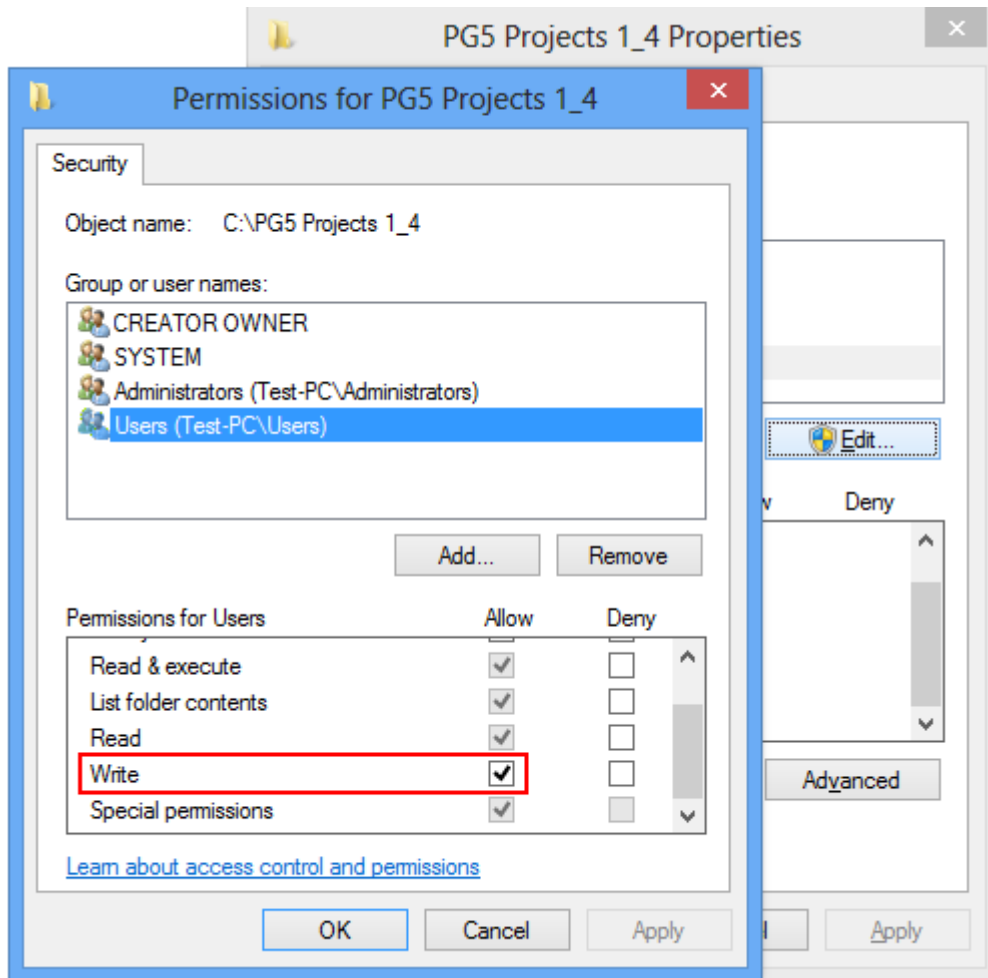
## 4.2 Adapt the user access rights of the default directory

To adapt the user access rights of the default directory, you have to:

- Open file explorer
- Select the directory 'PG5 Projects 14'
- Open the 'Properties' of the folder, using the context menu
- Select the 'Security' tab and select the corresponding 'Group or user names'



- Edit the 'Group or user names'
- Check the "Write" checkbox and press the 'Apply' button.

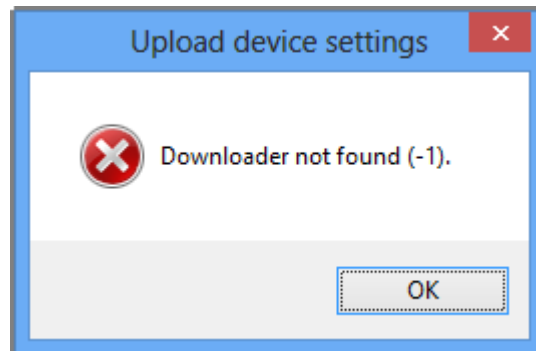


Now the selected directory (and sub-directories) is writable and will be accessible by PG5 1.4 without any access problem.



## 5. Device Configurator

- For using the Device Configurator, the Microsoft .Net Framework 3.5 has to be installed.
- Upload configuration from Device Configurator, Using USB – The error “Downloader not found” is displayed, and it cannot be done. Same for Download



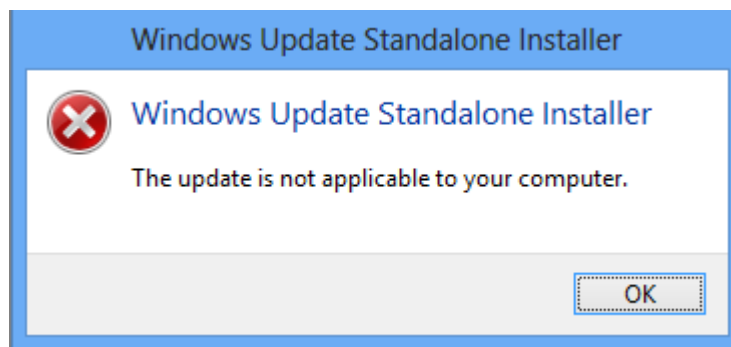
But this can be done in switching to Hardware Settings, and then Download/Upload the hardware configuration.

## 6. HLP help file format

The 'HLP' file format is in Windows 8 not supported by default.

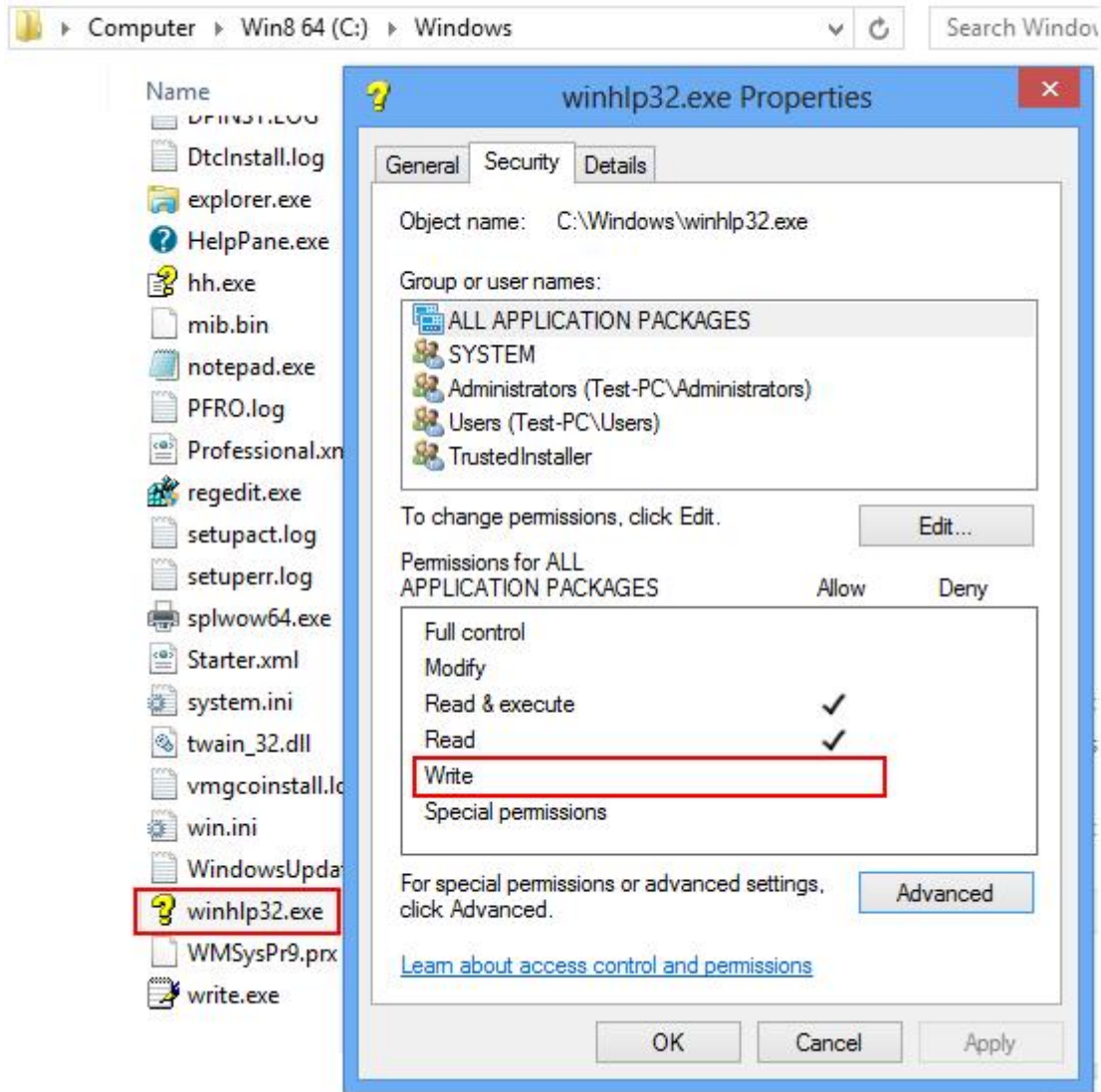
The file "winhlp32.exe" which is located under the 'Windows' directory, needs to be updated with File "Windows8\_RT\_KB917607-x64.msu, which can be downloaded from Microsoft.

In some cases, the update will fail and the following error message is displayed:



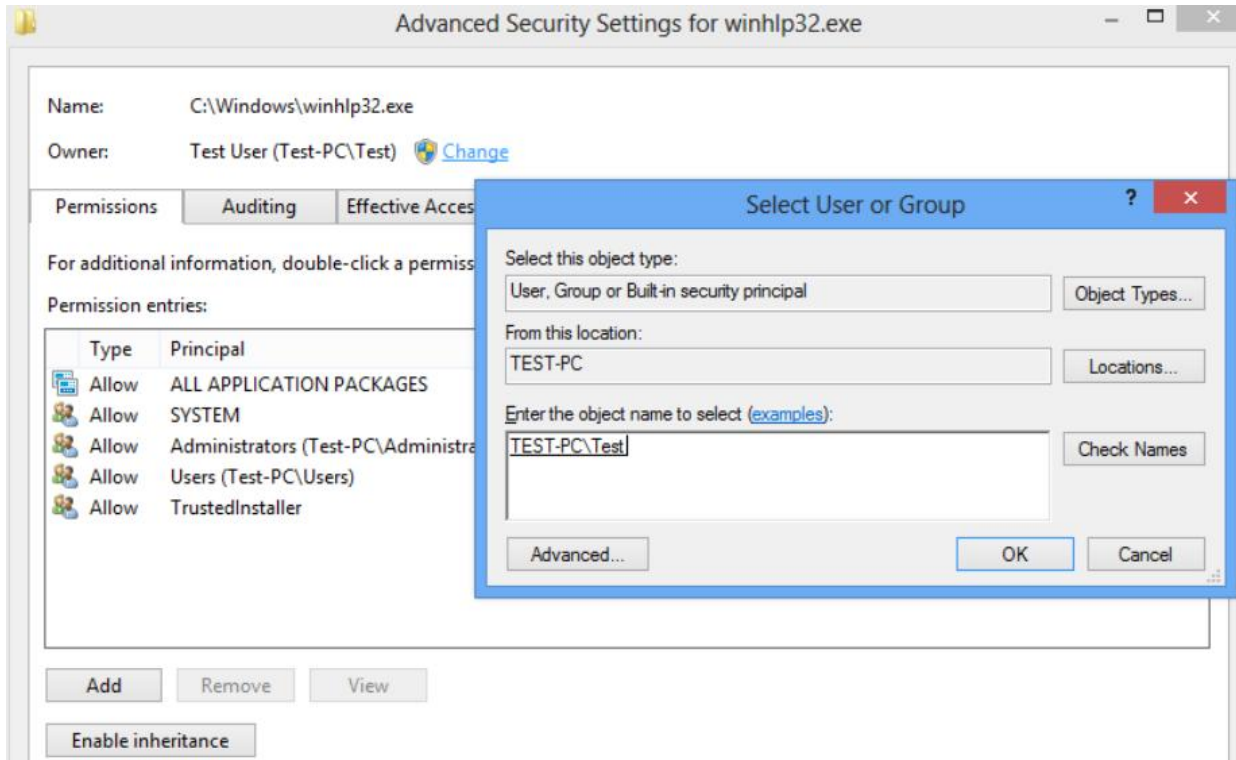
In this case, the file 'winhlp32.exe' has to be installed manually, in following the steps below:

- 1) Go to 'Windows' directory and open the 'Properties' dialog of the 'WinHlp32.exe' file, in using the context menu then go to the 'Security' tab and press the 'Advanced' button.



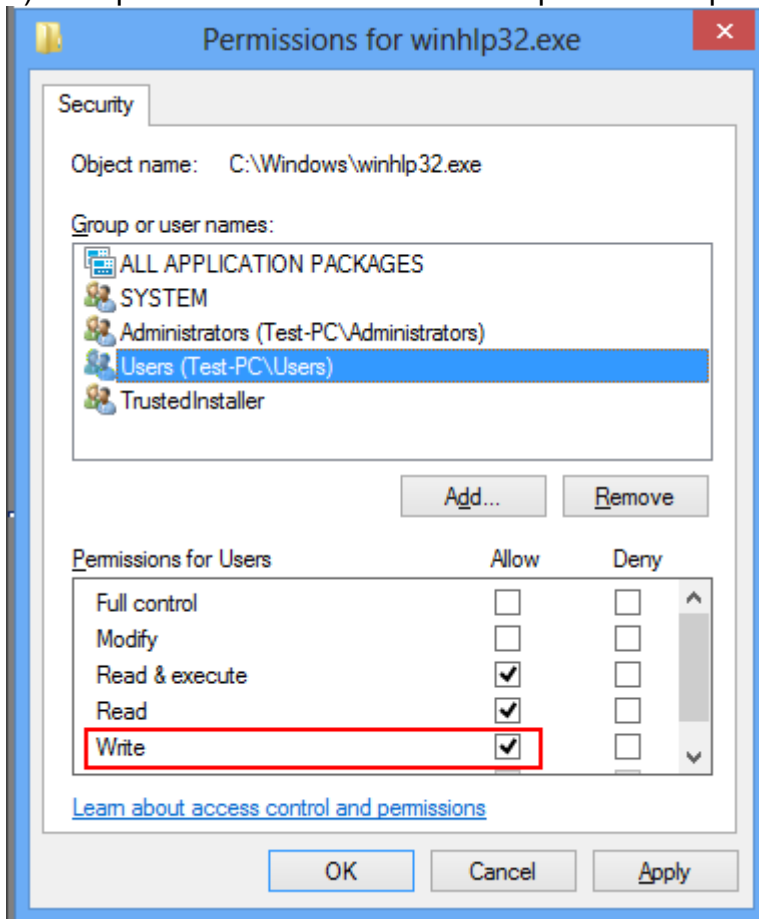
2) In the new dialog on the top, click on the Owner: TrustedInstaller Change link.

3) Type the user name to the "Enter the object name to select" text field and press check name - when it is accepted then press OK



4) In the "Advanced Security Settings for winhlp32.exe" dialog, press the 'Apply' button

5) Now press 'Edit...' button in 'winhlp32exe' Properties dialog



**Saia-Burgess** Controls AG

Bahnhofstrasse 18 | CH-3280 Murten | Schweiz

P +41 (0)26 672 72 72 | F +41 (0)26 672 74 99 | [www.saia-burgess.com](http://www.saia-burgess.com)

6) You can specify now the rights for the file, Allow Full control for the "Administrators" and press 'Apply', then 'OK', and 'OK'.

7) Copy the attached file – 'winhlp32.exe' to 'Windows' folder

## 7. Tests

In the following, you will find a resume of the test done, once the PG5 1.4 correctly installed on a Windows 8 64 bit.

- Open SBug and Connect to PCD via USB, Run, Display – OK
- Open Online Configurator and Connect to PCD, change Settings – OK
- Create a new project – OK
- Create new device – OK
- Create a new Fupla file, save, Build – OK
- Create a new IL file, save, Build – OK
- Create a new Graftec file, save, Build – OK
- Create a new HMI file, save, Build – OK
- Open Watch Window, drag and drop symbols, Start Monitoring – OK
- Open SDat, quick upload, download data to PCD - OK
- Create new .SIO File, configure it, compile, Build – OK
- Download hardware settings using PGU, USB – OK
- Download program using PGU, USB – OK
- Firmware Downloader, download firmware via USB – OK
- Web Connect, Open Configuration, Add Station – USB is missing in Connection Type
- Restore and build a project SIO - OK
- Create a new BACNet file, save and build – OK
- Create a Web Server file, open it, generate files, build - OK